



PRECISION

COMPENSATED SONIC

Compact

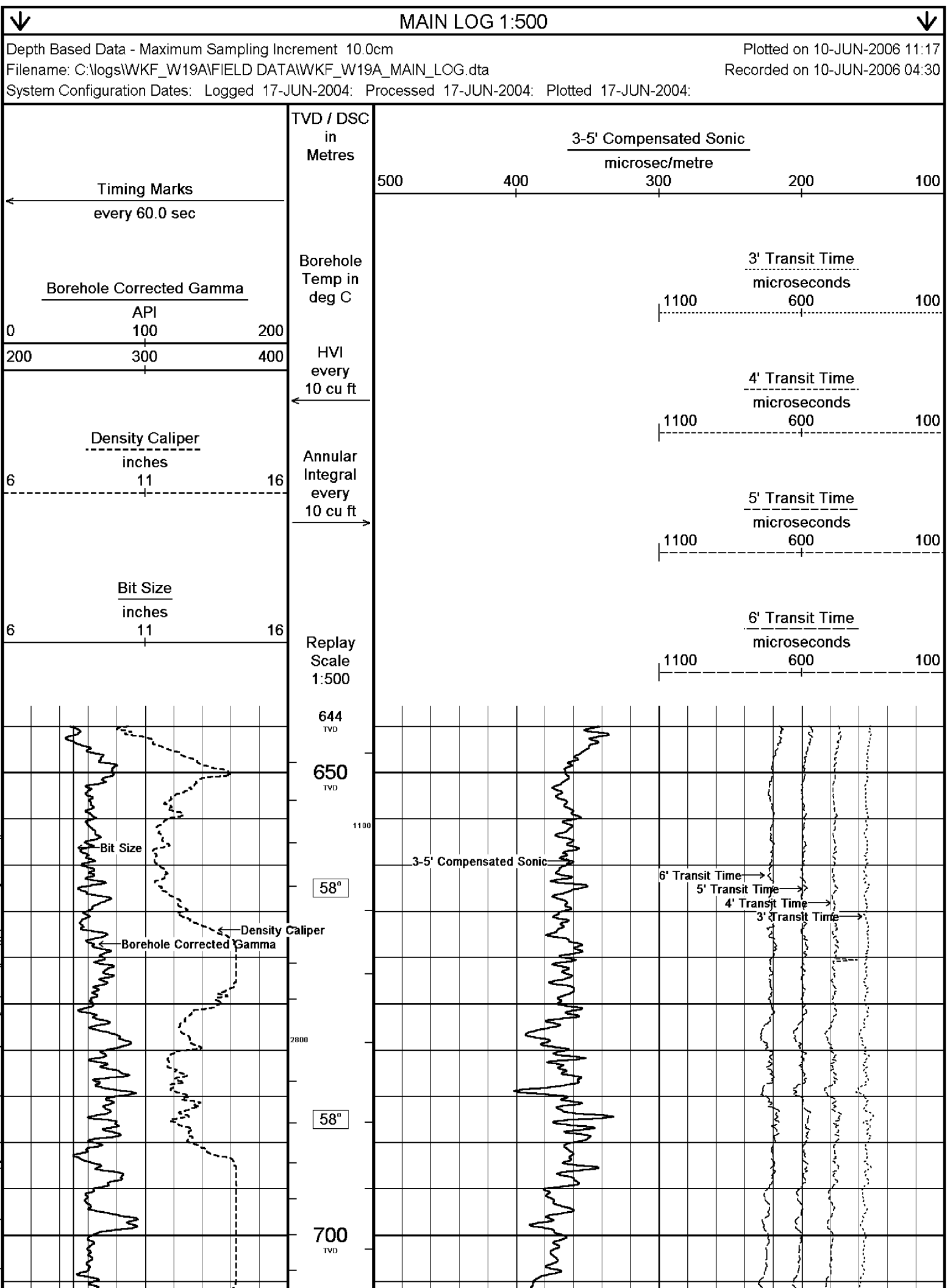
1:500 TVD

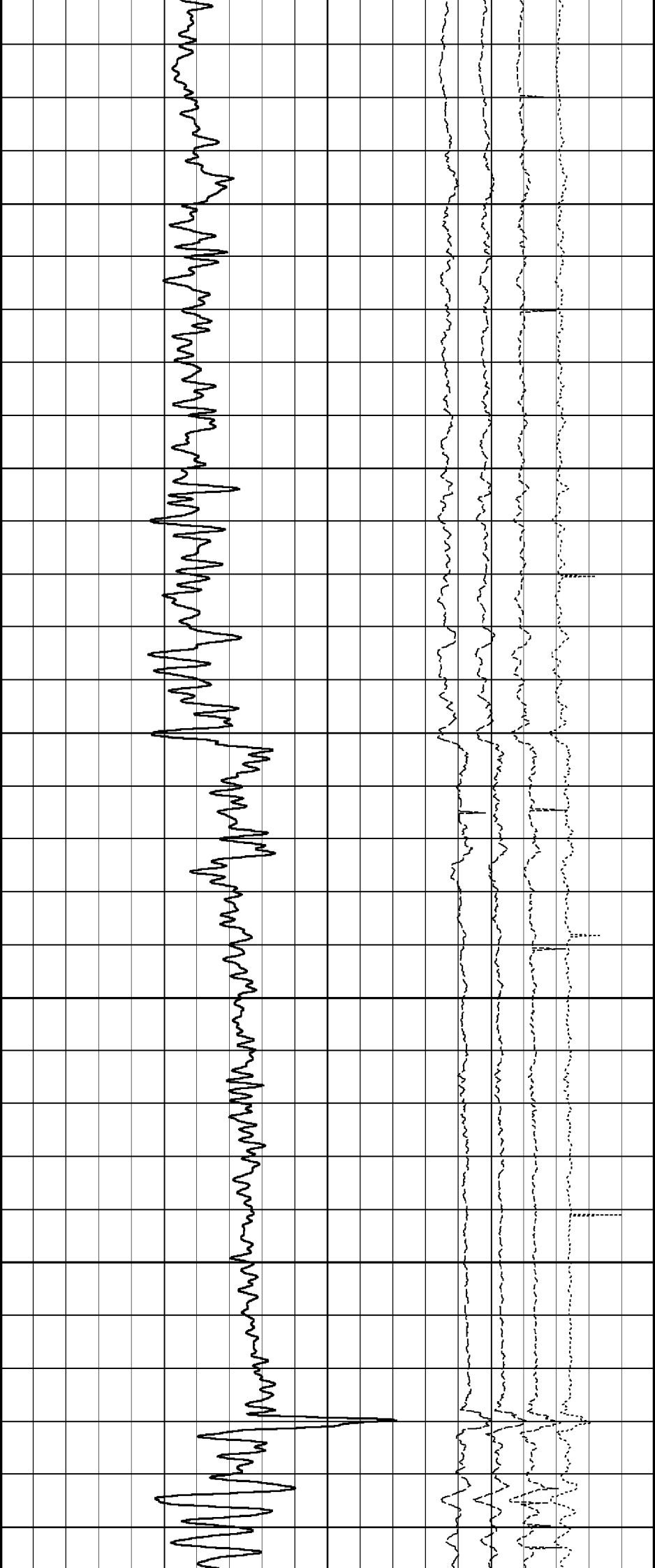
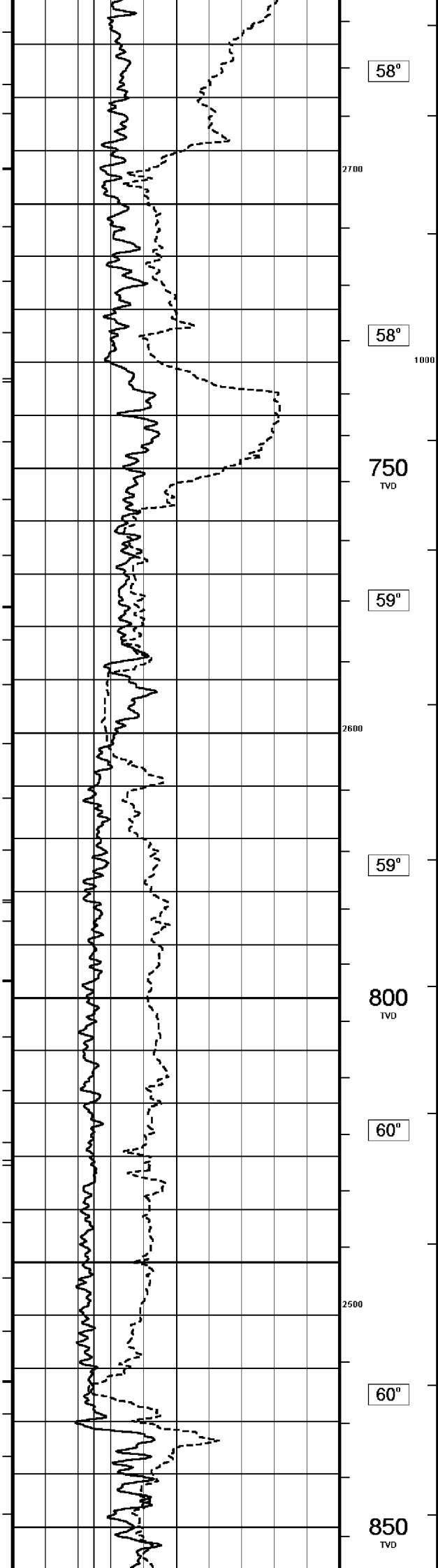
COMPANY			ESSO AUSTRALIA PTY.LTD		
WELL			WKF W19A		
FIELD			KINGFISH GDA94		
PROVINCE/COUNTY			BASS STRAIT, VICTORIA		
COUNTRY/STATE			AUSTRALIA		
LOCATION			S 38 35 34.833, E 148 6 19.318		
			N 5727806.791 m, E 596262.840 m		
			FIELD PRINT		
LSD	SEC	TWP	RGE	Other Services	
				DUAL LATEROLOG	
API Number				COMPENSATED NEUTRON	
Permit Number				PHOTO DENSITY	
Permanent Datum L				, Elevation 0.0 metres	
Log Measured From DF @ 33.4m				above Permanent Datum	
Drilling Measured From DF				Elevations:	
Date	10-JUN-2006			KB	metres
				DF	33.43
				GL	-76.13
					metres
Run Number	ONE				
Depth Driller	2373.41			metres	
Depth Logger	2370.70			metres	
First Reading	2366.30			metres	
Last Reading	649.30			metres	
Casing Driller	649.30			metres	
Casing Logger	649.30			metres	
Bit Size	8.50			inches	
Hole Fluid Type	KCL/PHPA				
Density / Viscosity	1.13	g/cc	23.00	CP	
PH / Fluid Loss	8.80		3.40	ml/30Min	
Sample Source	FLOWLINE				
Rm @ Measured Temp	0.106 @ 25.0			ohm-m	
Rmf @ Measured Temp	0.085 @ 25.0			ohm-m	
Rmc @ Measured Temp	0.114 @ 25.0			ohm-m	
Source Rmf / Rmc	MEAS		MEAS		
Rm @ BHT	0.05 @ 79.3			ohm-m	
Time Since Circulation	37 HRS				
Max Recorded Temp	83.20			deg C	
Equipment Name	CWL				
Equipment / Base	1		SALE		
Recorded By	R L TENCH, B J R MOSS				
Witnessed By	T LOBO				
LAST CIRC	8/06 04:00			Last Line	

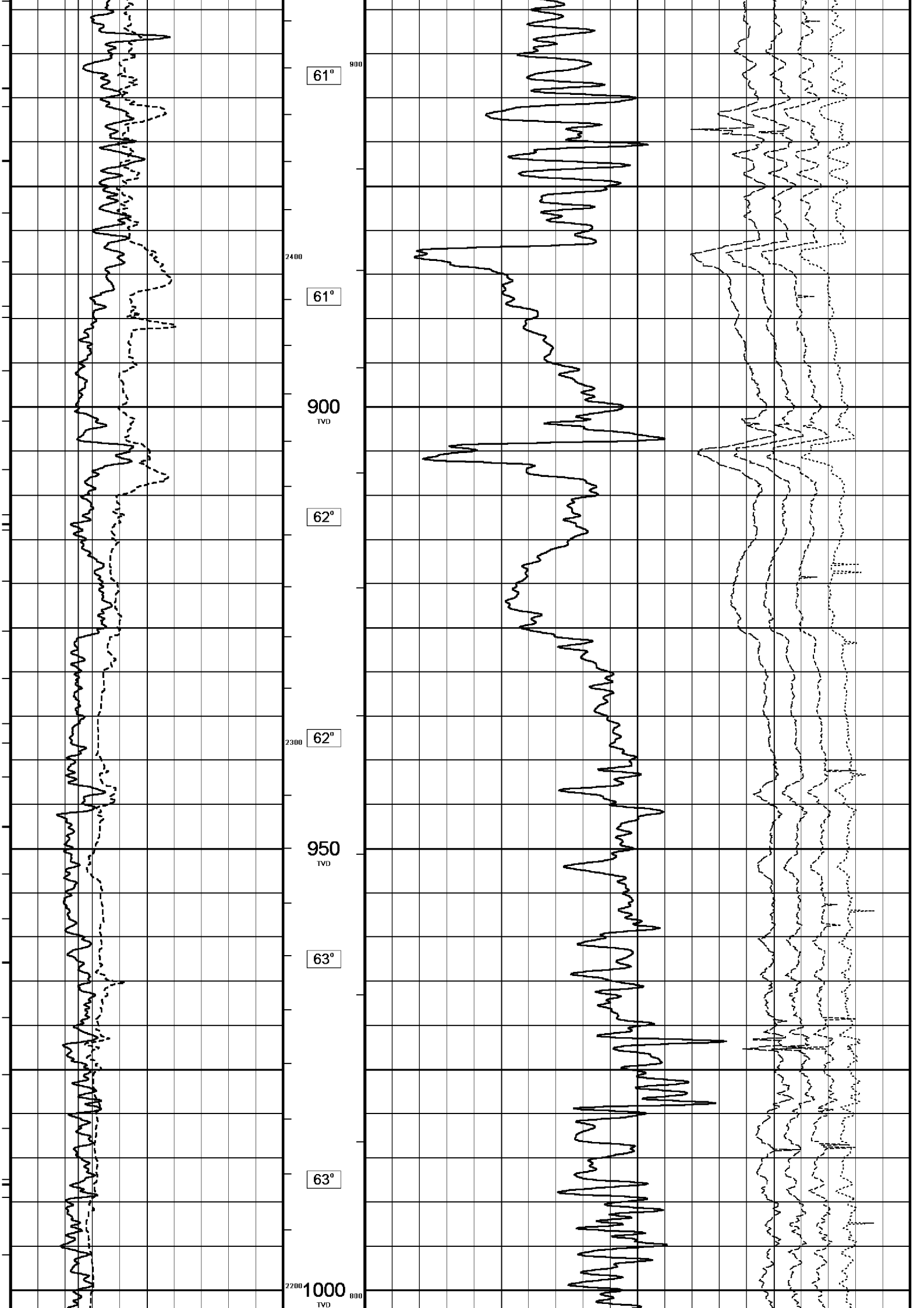
BOREHOLE RECORD				
Bit Size inches		Depth From metres		Depth To metres
8.500		666.00		2687.00
CASING RECORD				
Type	Size inches	Depth From metres	Shoe Depth metres	Weight pounds/ft
K-55	10.750	0.00	666.00	40.50

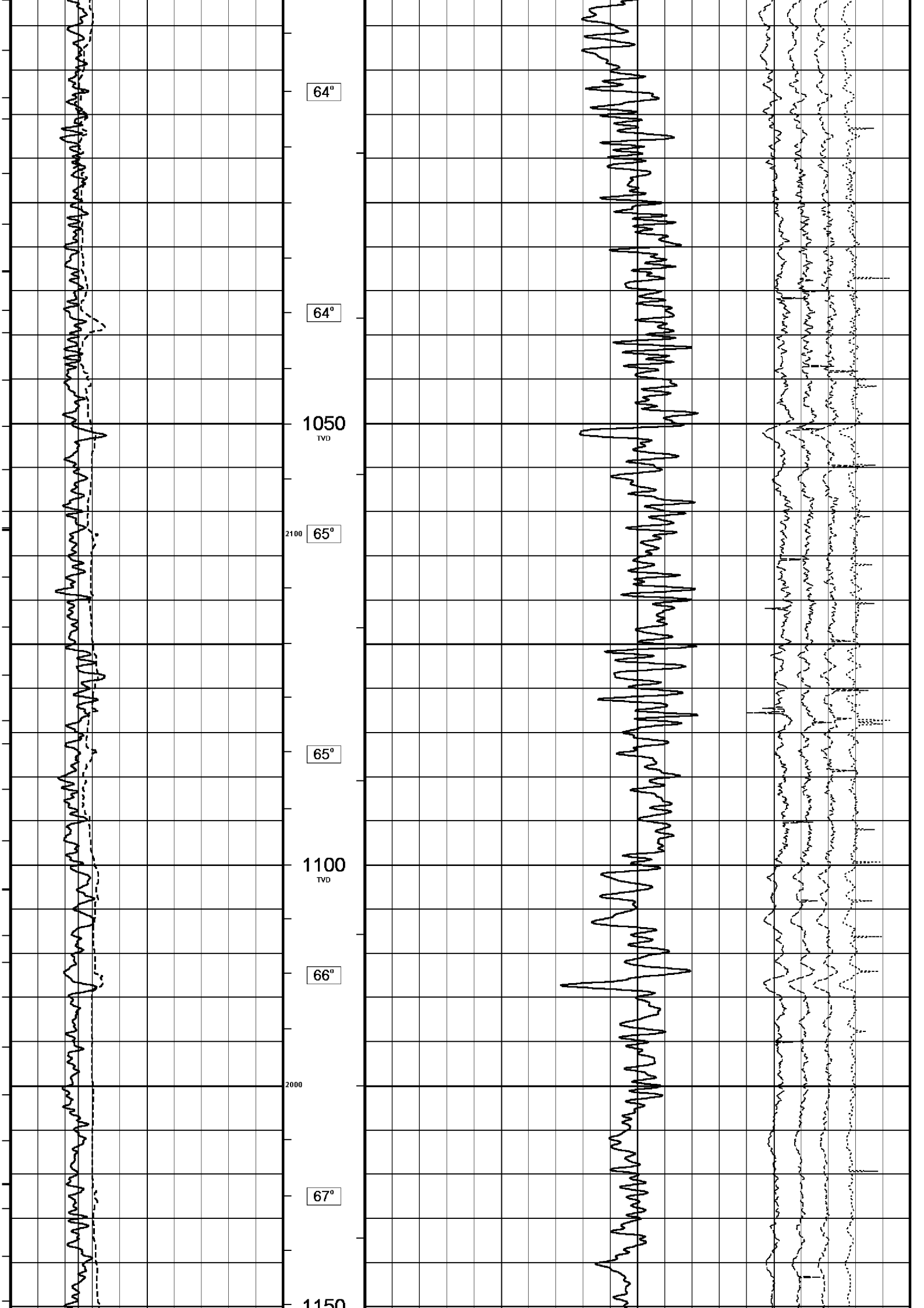
REMARKS
RIG: NABORS 453
5" SHUTTLE/MEMORY COMPACT OPERATION. CREW: R TENCH , B MOSS , B GOODWIN, M KOLCZE.
FIELD FINAL LOGS TO BE CORRELATED TO ANADRILL GAMMA LOG.
MAX. TEMPERATURE: 83.2 DEG C AT 2636 m MD MAX. INCLINATION: 37 DEG AT 665 m MD MAX. DOGLEG SERVERITY: 6.21 DEG/30m AT 696.25 m MD DEPLOYMENT ANGLE: 26.98 DEG
HVOL: 2890 FT^3 AVOL: 1120 FT^3
LOGGING SPEED 6M/MIN FROM TD TO 2439.2 M MD LOGGING SPEED 12 M/MIN FROM 2439.2 TO 1749.3 M MD LOGGING SPEED 6 M/MIN FROM 1749.3 TO 1519.3 M MD LOGGING SPEED 12 M/MIN FROM 1519.3 TO 1289.4 M MD LOGGING SPEED 6 M/MIN FROM 1289.4 TO 628.8 M MD

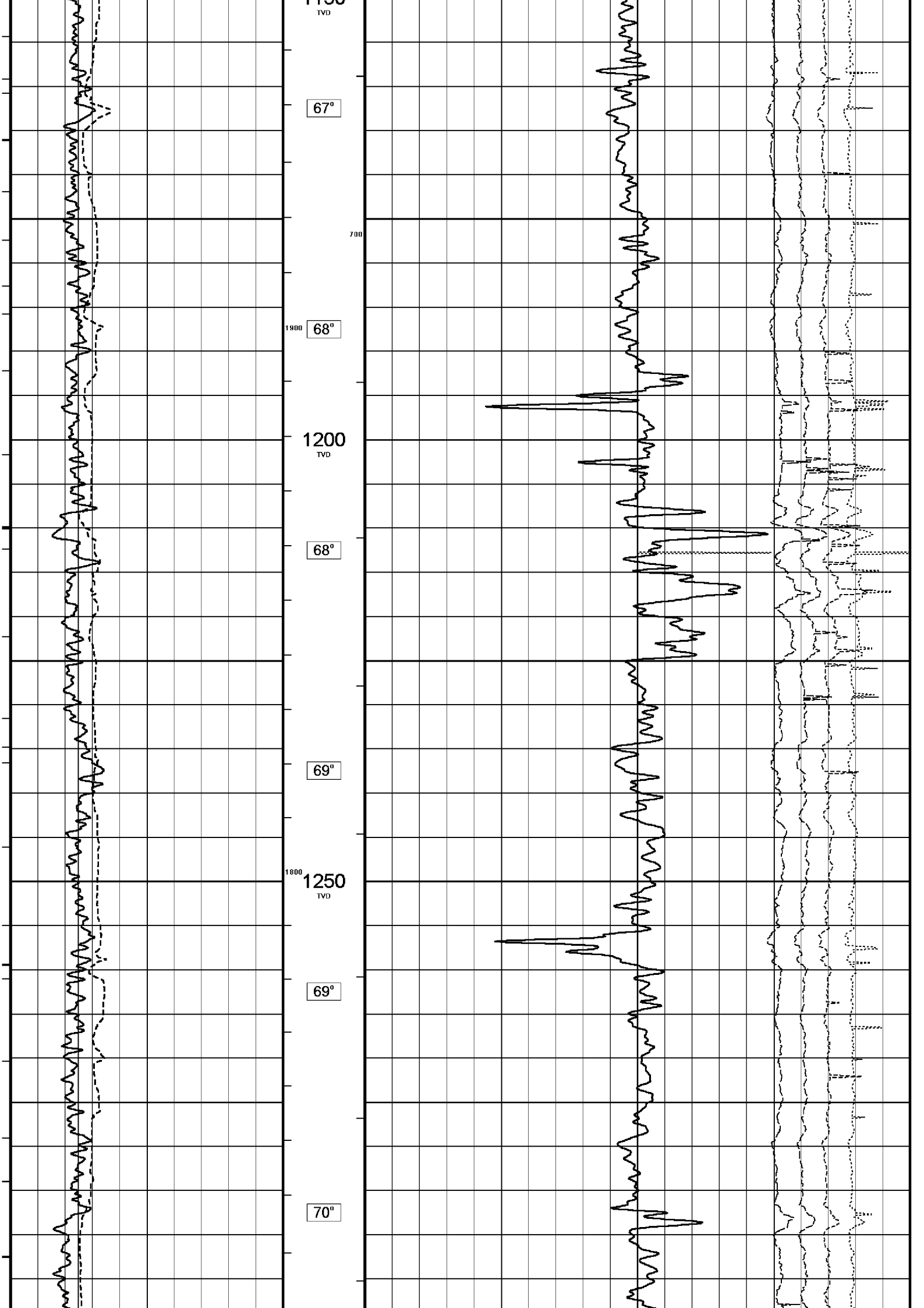
All interpretations are opinions based on data provided to us by others. We warrant only that we have prepared the log in accordance with the information provided to us. We do not warrant the accuracy or correctness of any interpretations, and we shall not, except in the case of gross or wilful negligence on our part, be liable or responsible for any loss, costs, damages or expenses incurred or sustained by anyone resulting from any interpretation made by any of our officers, agents or employees. These interpretations are also subject to our general terms and conditions in our price schedule.

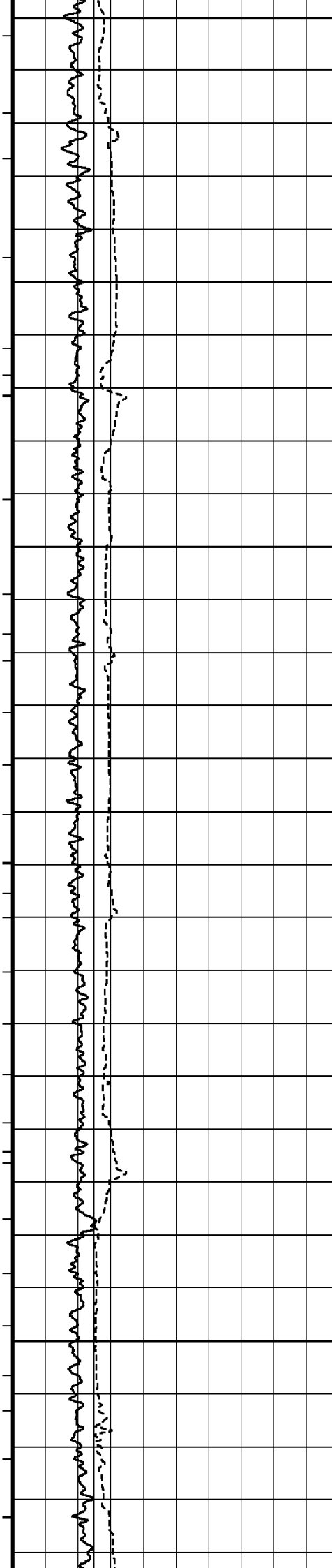












1300
TVD

1700 70°

71°

1350
TVD

600

71°

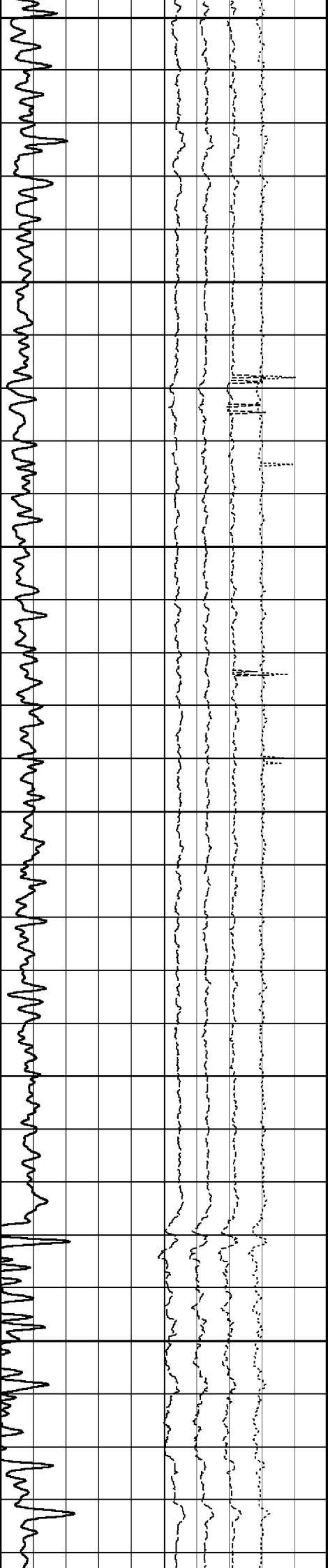
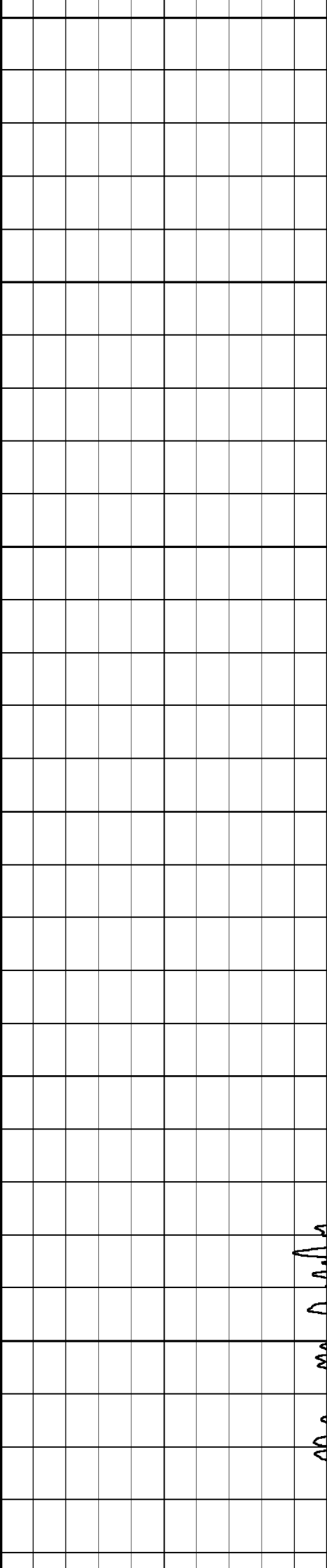
1600

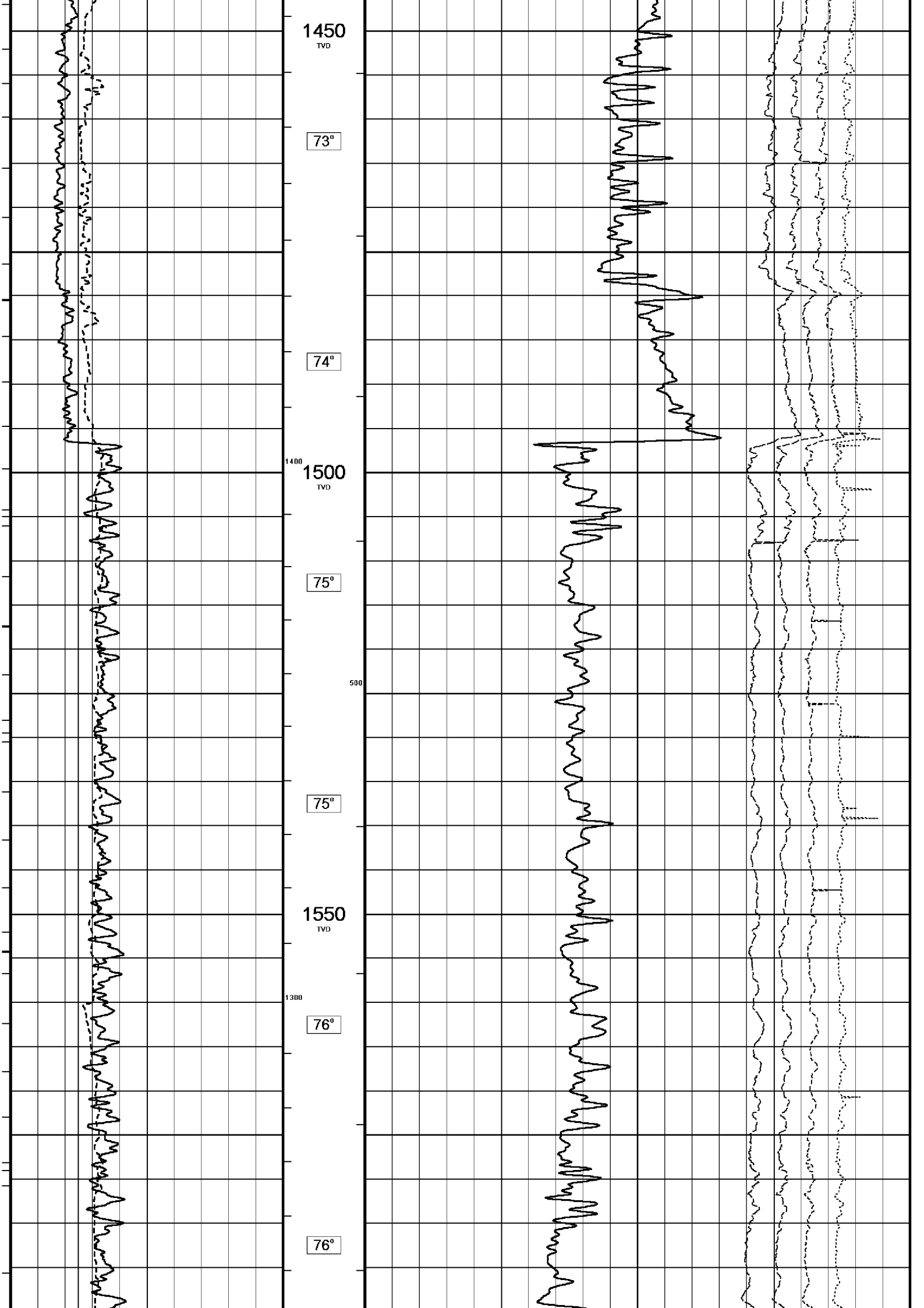
72°

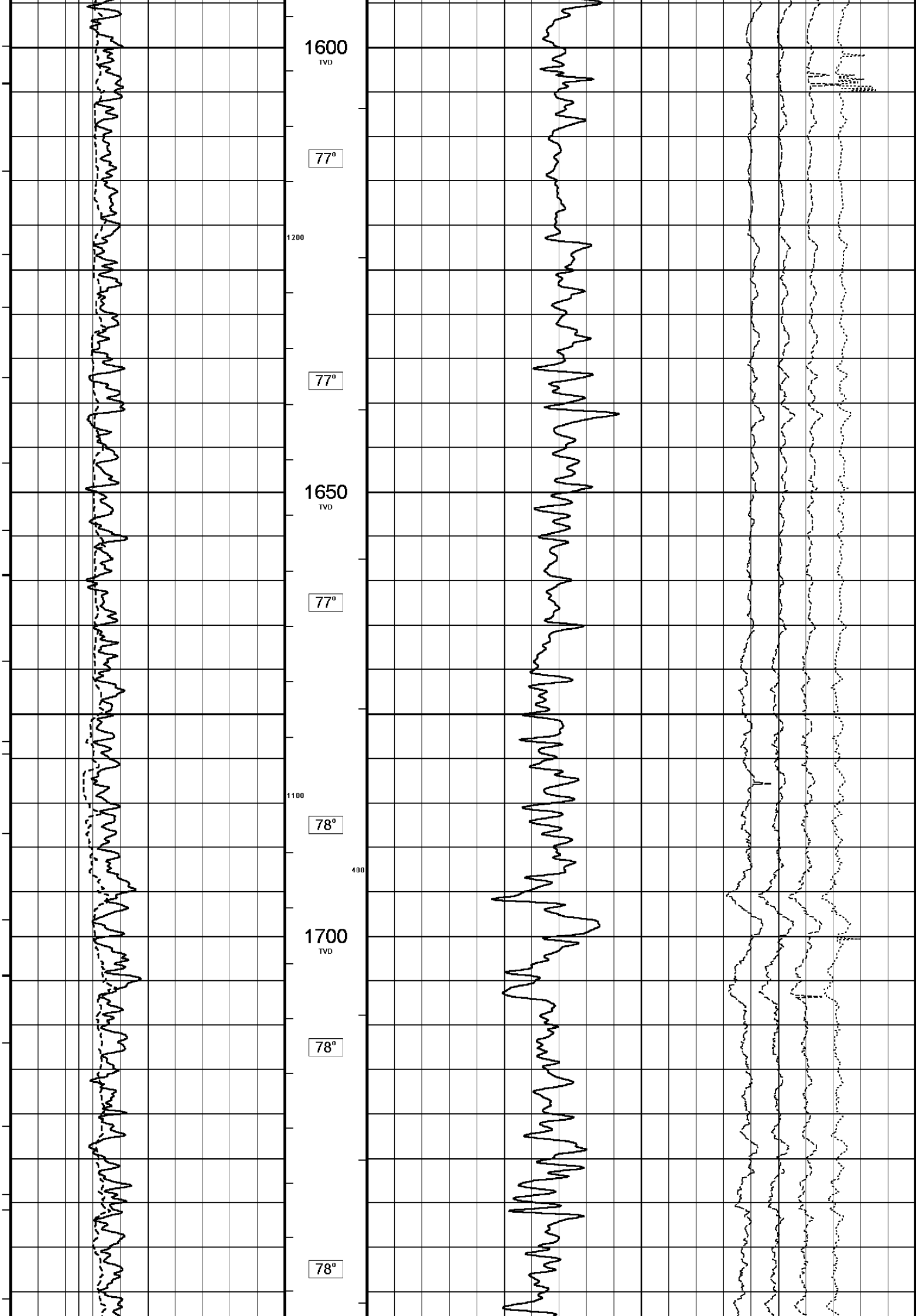
1400
TVD

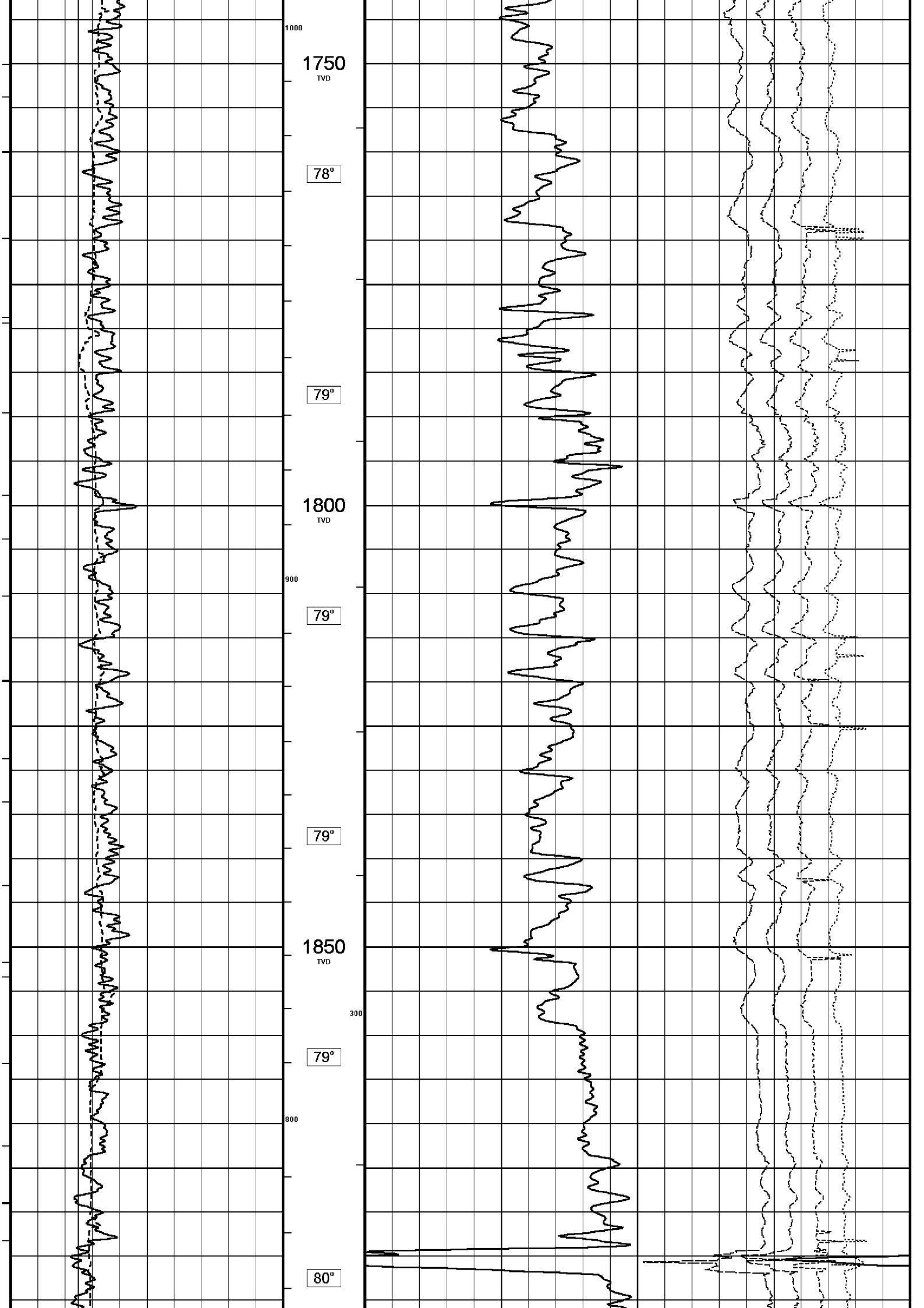
72°

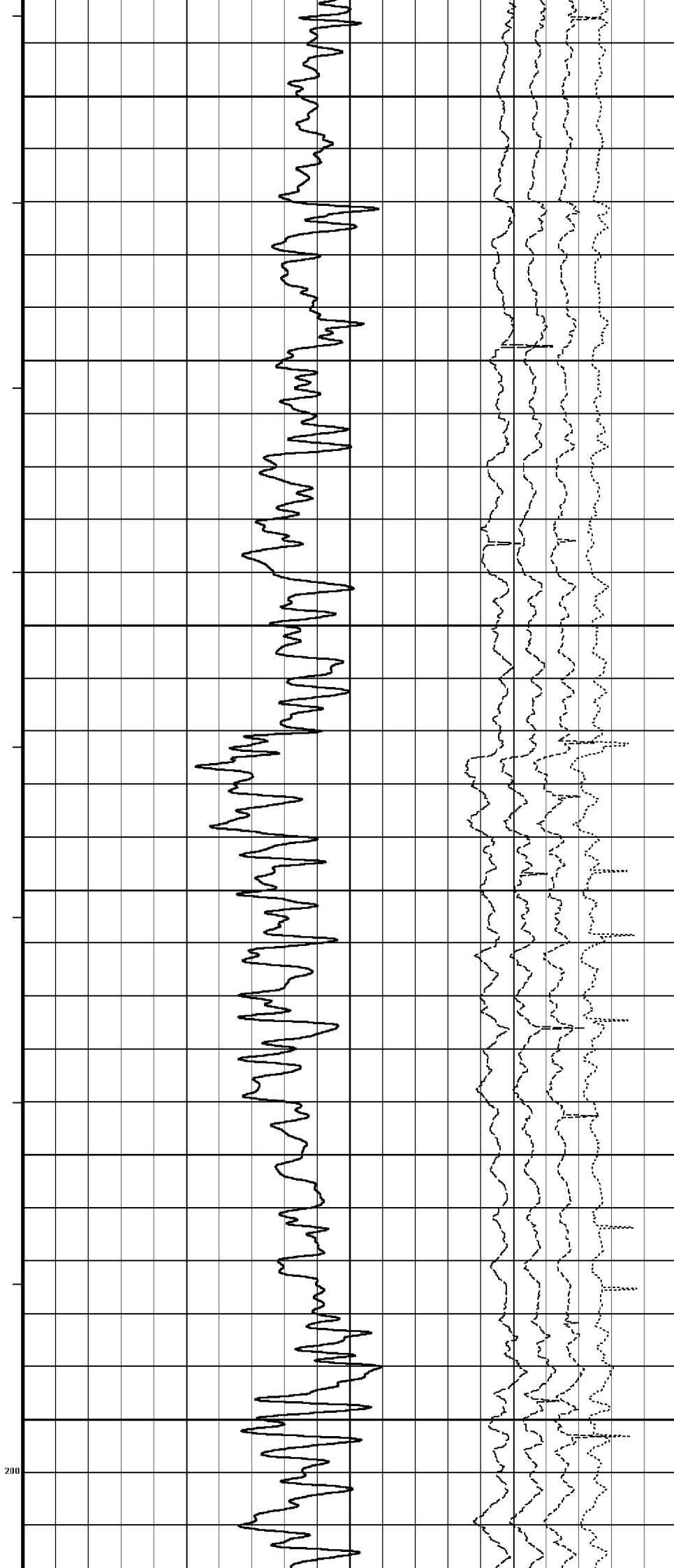
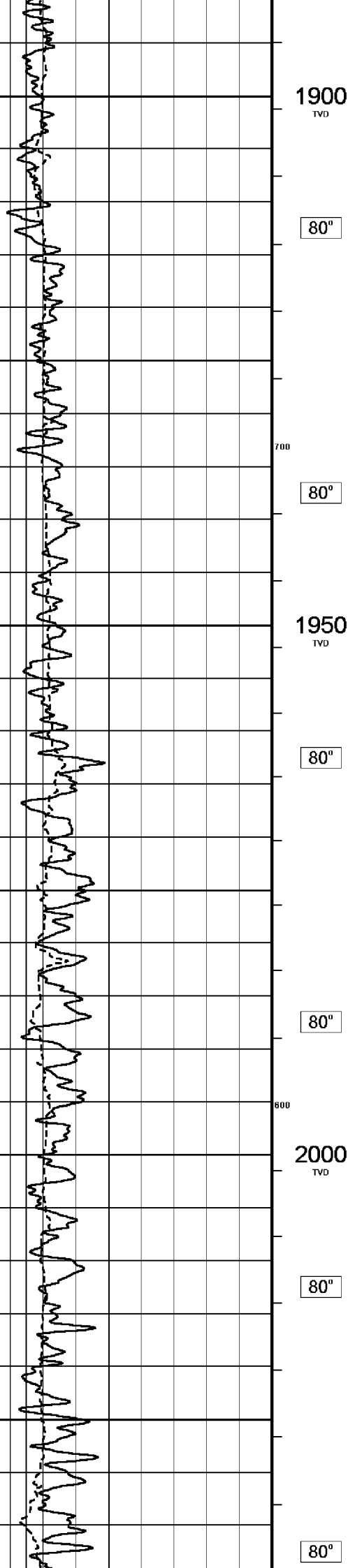
1500 73°

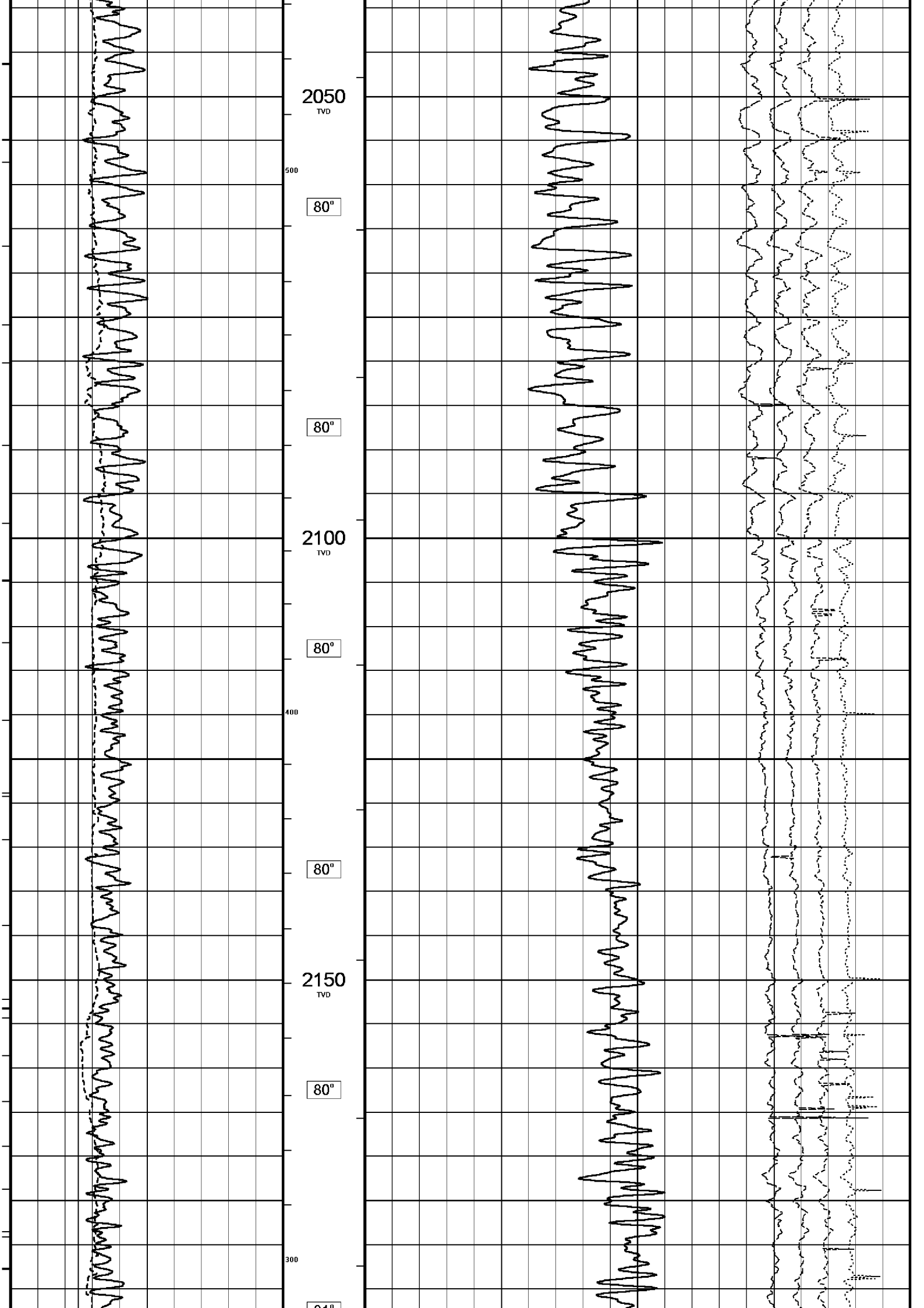


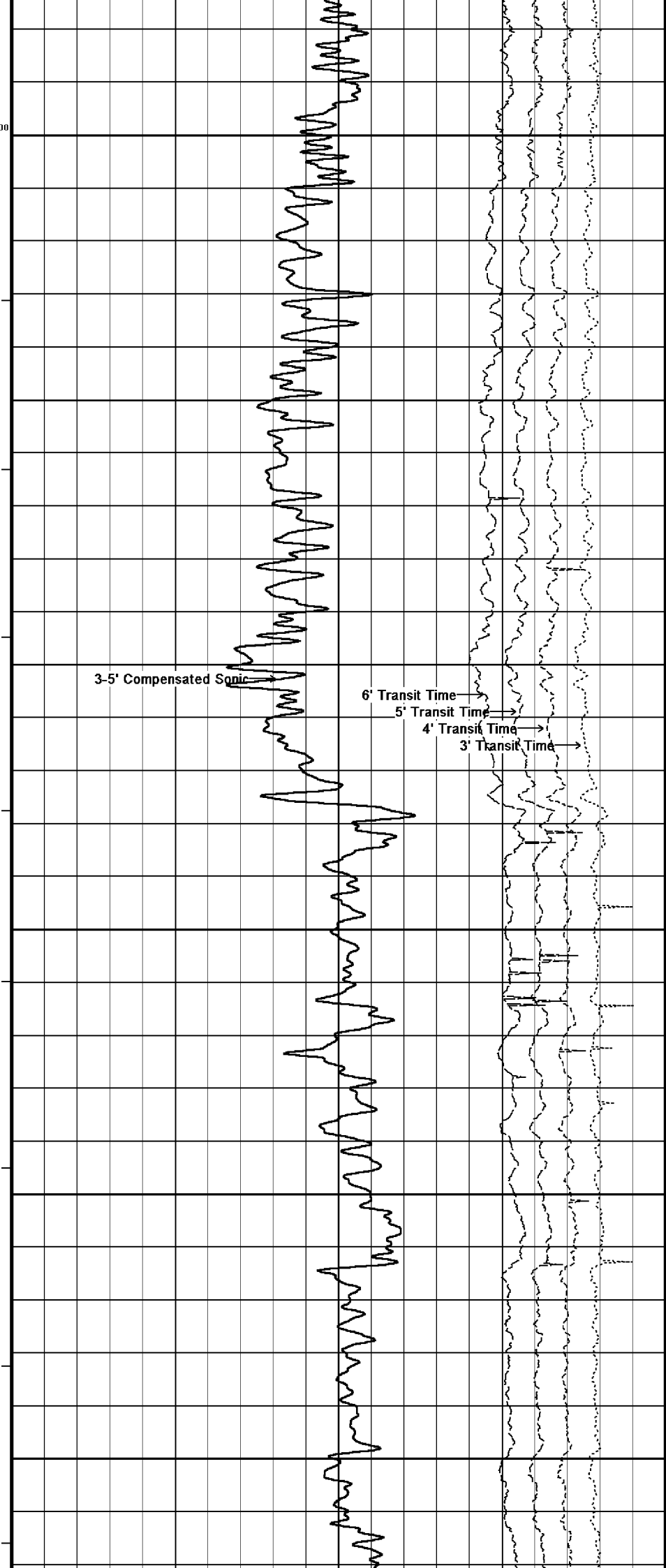
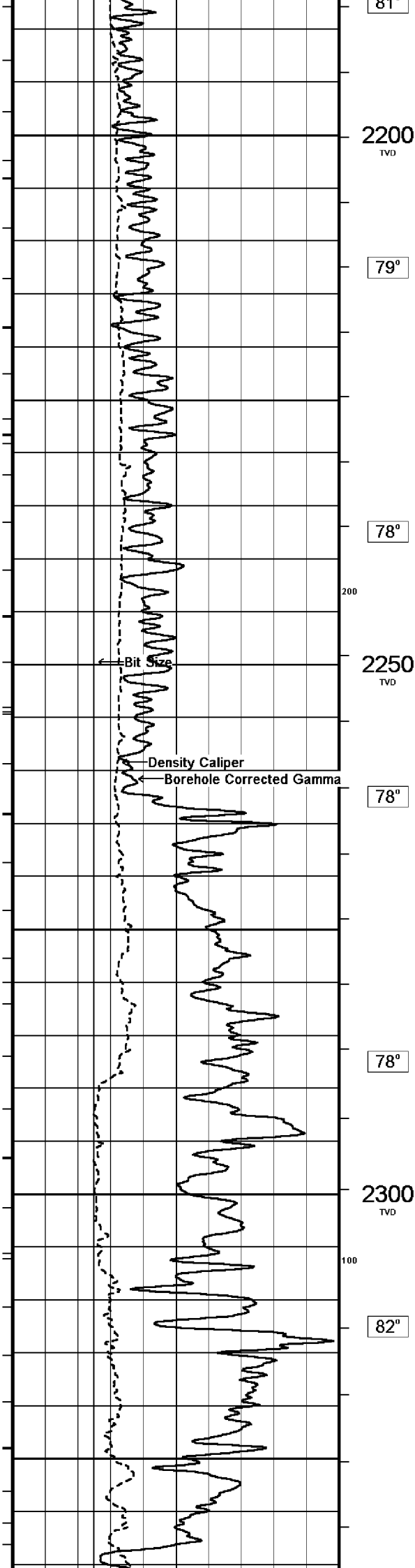


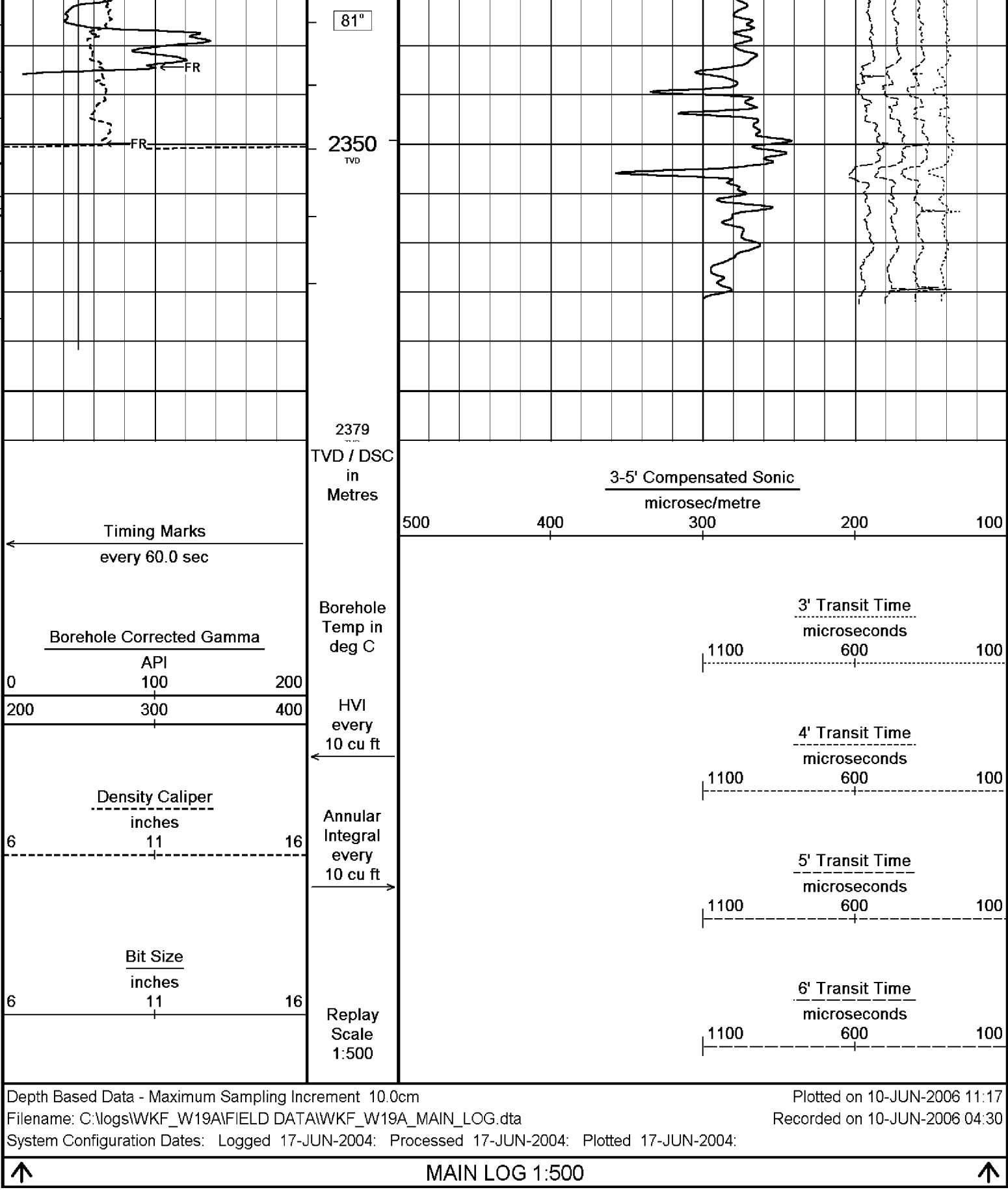












BEFORE SURVEY CALIBRATION		
C:\logs\WKF_W19A\FIELD DATA\WKF_W19A_MAIN_LOG.dta		
General Constants All 000		
General Parameters		
Mud Resistivity	0.122	ohm-metres
Mud Resistivity Temperature	25.000	degrees C
Water Level	0.000	metres
Density/Neutron Processing	Wet Hole	

Hole/Annular Volume and Differential Caliper Parameters			
HVOL Caliper 1	Density Caliper		
HVOL Caliper 2	Bit Size		
Annular Volume Diameter	7.000	inches	
Caliper for Differential Caliper	None		
Rwa Parameters			
Porosity used	Base Density Porosity		
Resistivity used	Deep Induction		
RWA Constant A	0.610		
RWA Constant M	2.150		

High Resolution Temperature Calibration MCG 142			Field Calibration on 22-MAY-2006,23:42
	Measured	Calibrated(Deg C)	
Lower	0.00	0.00	
Upper	100.00	100.00	

High Resolution Temperature Constants MCG 142	
Pre-filter Length	11

Gamma Calibration MCG 142			Field Calibration on 7-JUN-2006 23:40
	Measured	Calibrated (API)	
Background	12	8	
Calibrator (Gross)	1393	917	
Calibrator (Net)	1381	909	

Gamma Constants MCG 142			
Gamma Calibrator Number	60		
Mud Density	1.13	gm/cc	
Caliper Source for Processing	Density Caliper		
Tool Position	Eccentred		
Concentration of KCl	0.00	kppm	

Caliper Calibration MPD 083			Base Calibration on 31-MAY-2006 16:59
			Field Calibration on 8-JUN-2006 01:20
Base Calibration			
Reading No	Measured	Calibrator Size (in)	
1	14224	4.01	
2	22476	5.99	
3	30896	7.98	
4	39296	9.94	
5	48692	12.01	
6	N/A	N/A	
Field Calibration			
	Measured Caliper (in)	Actual Caliper (in)	
	7.92	7.98	

Sonic Constants MSS 066				
Maximum Boundary Contrast	100.00	micro-sec/ft		
Fluid Transit Time	189.00	micro-sec/ft		
Limestone Transit Time	47.50	micro-sec/ft		
Sandstone Transit Time	55.50	micro-sec/ft		
Dolomite Transit Time	43.50	micro-sec/ft		
Sonic used for Porosities	3-5' Compensated Sonic			
Correction for Sonde Skew	Applied			
Cycle Stretch Algorithm	Applied			
MN3FT	N/A	micro-sec		
MX3FT	N/A	micro-sec		
Fixed Gate Parameters				
Start Time (micro-sec)	End Time (micro-sec)	Discriminator (mV)	N/A	
N/A	N/A	N/A		N/A
N/A	N/A	N/A		N/A
N/A	N/A	N/A		N/A
N/A	N/A	N/A		N/A
N/A	N/A	N/A		N/A
Down Hole Fixed Gate Parameters				
Gate Start	N/A	micro-sec		
Gate Width	N/A	micro-sec		
Initial Discriminator Level	0.0000	mVolts		

Full Waveform Parameters

Use 3' Waveform to derive TR	No	
Use 4' Waveform to derive TR	No	
Use 5' Waveform to derive TR	No	
Use 6' Waveform to derive TR	No	
3' Waveform Discriminator Level	0.45	mV
4' Waveform Discriminator Level	0.45	mV
5' Waveform Discriminator Level	0.35	mV
6' Waveform Discriminator Level	0.35	mV
3' Waveform Filter	None	
4' Waveform Filter	None	
5' Waveform Filter	None	
6' Waveform Filter	None	
Semblance Level	0.50	
Semblance Window Width	120.00	micro-sec
Sonic 1 Despiker	100.00	micro-sec/ft
Sonic 2 Despiker	100.00	micro-sec/ft

DOWNHOLE EQUIPMENT

C:\logs\WKF_W19A\FIELD DATA\WKF_W19A_MAIN_LOG.dta

Compact Swivel Head Adaptor F

SHA 71 Length: 0.83 m Weight: 26.5 lb

Compact Knuckle Joint

SKJ 100 Length: 0.66 m Weight: 24.3 lb

Compact Battery Sub.

MBS 99 Length: 4.41 m Weight: 44.1 lb

Compact Inline Standoff B

MIS 73 Length: 0.65 m Weight: 15.4 lb

Compact Stiff Bridle Electrode Sub.

MBE 18 Length: 3.76 m Weight: 94.8 lb

Compact Inline Standoff B

MIS 138 Length: 0.65 m Weight: 15.4 lb

Compact Stiff Bridle Electrode Sub.

MBE 19 Length: 3.76 m Weight: 94.8 lb

Compact Inline Standoff B

MIS 136 Length: 0.65 m Weight: 15.4 lb



MBE21 - THIRD BRIDLE
MLK 111 Length: 3.76 m Weight: 30.9 lb

Compact Inline Standoff B
MIS 133 Length: 0.65 m Weight: 15.4 lb

Compact Gamma
MCG 142 Length: 2.65 m Weight: 63.9 lb

Compact Memory Sub A.C
MMS 38 Length: 0.95 m Weight: 30.9 lb

Compact Knuckle Joint
SKJ 45 Length: 0.66 m Weight: 24.3 lb

Compact Swivel Head Adaptor F
SHA 64 Length: 0.83 m Weight: 26.5 lb

Compact Inline Bowspring A
MIS 94 Length: 1.74 m Weight: 33.1 lb

Compact Neutron
MDN 85 Length: 1.53 m Weight: 50.7 lb

Compact Density/Caliper
MPD 83 Length: 2.92 m Weight: 90.4 lb

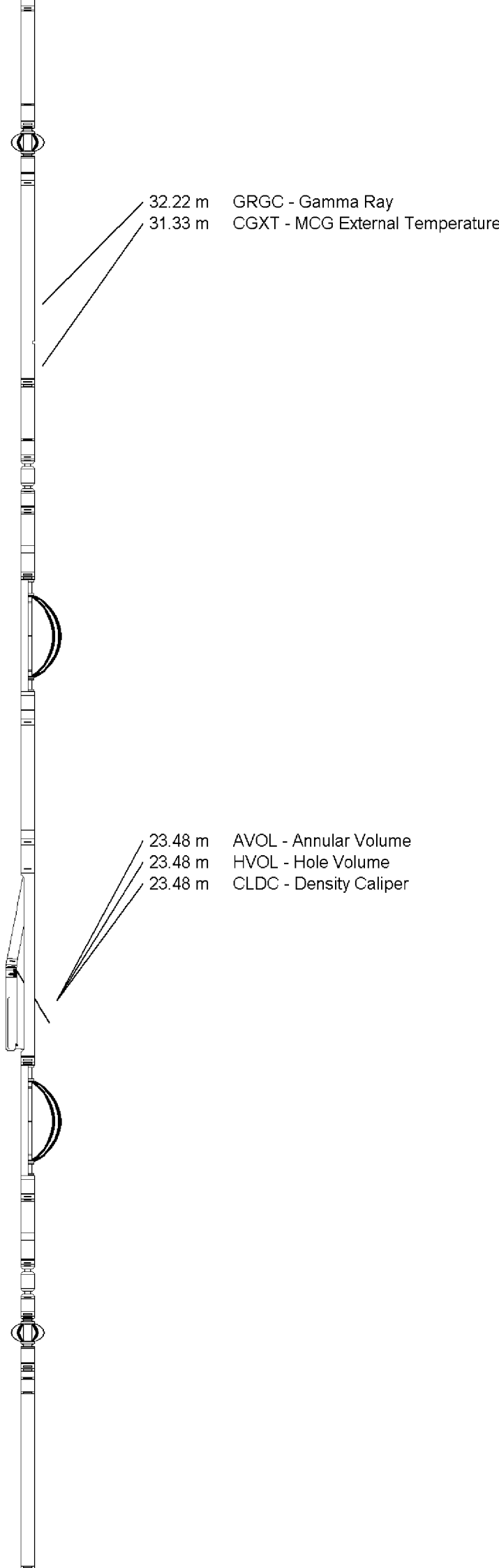
Compact Inline Bowspring A
MIS 24 Length: 1.74 m Weight: 33.1 lb

Compact Swivel Head Adaptor
SHA 28 Length: 0.83 m Weight: 26.5 lb

Compact Knuckle Joint
SKJ 110 Length: 0.66 m Weight: 24.3 lb

Compact Inline Standoff B
MIS 72 Length: 0.65 m Weight: 15.4 lb

Compact Upper Guard Sub.
MUG 30 Length: 2.74 m Weight: 68.3 lb



Compact Inline Standoff B
MIS 141 Length: 0.65 m Weight: 15.4 lb

Compact Laterolog Electrode Sub.
MLE 31 Length: 3.76 m Weight: 92.6 lb

Compact Inline Standoff B
MIS 127 Length: 0.65 m Weight: 15.4 lb

Compact Lower Guard Sub.
MLG 7 Length: 2.44 m Weight: 55.1 lb

Compact Inline Standoff B
MIS 129 Length: 0.65 m Weight: 15.4 lb

Compact Sonic
MSS 66 Length: 3.82 m Weight: 72.8 lb

Compact Inline Standoff B
MIS 126 Length: 0.65 m Weight: 15.4 lb

Compact Induction
MAI 39 Length: 3.29 m Weight: 48.5 lb

Pressure Bung + Hole Finder
HFS 4 Length: 0.40 m Weight: 6.6 lb

Total Length: 54.01 m Weight: 1201.5 lb



4.60 m TR21 - 3' Transit Time
4.60 m TR12 - 6' Transit Time
4.60 m TR22 - 5' Transit Time
4.60 m TR11 - 4' Transit Time

4.60 m DT35 - 3-5' Compensated Sonic

Tool Zero (0.44m from bottom)

All measurements relative to tool zero.

COMPANY	ESSO AUSTRALIA PTY.LTD
WELL	WKF W19A
FIELD	KINGFISH GDA94
PROVINCE/COUNTY	BASS STRAIT, VICTORIA
COUNTRY/STATE	AUSTRALIA

Elevation Kelly Bushing	metres	First Reading	2366.30	metres
Elevation Drill Floor	33.43 metres	Depth Driller	2373.41	metres
Elevation Ground Level	30.12 metres	Depth Logger	2370.70	metres



COMPENSATED SONIC
1:500 TVD